



# Habitat Restorations Aotearoa Ltd.

[glen@habitatrestorations.nz](mailto:glen@habitatrestorations.nz)

027 424 0224

[www.habitatrestorations.nz](http://www.habitatrestorations.nz)

**21.05.2025**

**Waiora Manuherekia**

**Planting proposal for Craig Webster**

Please find below proposed planting details for the wetland at Craig Webster's wetland. These suggestions have considered the approximate budget for planting allocated for the different sites and recommendations provide the best outcomes for these budgets.

## **Websters**

The planting area is currently fenced and has some existing raupō and rushes (Figure 15 and Figure 16). It is likely that much of the site could become inundated during wetter months and, therefore, it is recommended that the area is predominantly planted with carex. However, where there are higher pockets of land, there is the opportunity to plant some woody species. There is also the potential that the site could provide good habitat for galaxiids as these are present in the adjacent wetland.

It is recommended that views from the adjacent road into the wetland are considered when choosing and locating plants, so views of the wetland from the road are not screened. Consideration should also be given to the powerlines which run parallel to the road, on the western edge of the planting area.

Overall, the area will require a higher percentage of plants than in other proposed planting sites as there is a general absence of regenerating plants. It is recommended that planting is at 2m spacings.

**Budget:** \$22,500

**Total plant numbers:** approximately 1100 plants.

Planting list:

- *Austroderia richardii* (toetoe)
- *Carex secta* (pukio/sedge)
- *Coprosma rugosa* (needle-leaved mountain coprosma)
- *Coprosma propinqua* (mingimingi)
- *Cordyline australis* (tī kōuka/cabbage tree)
- *Dacrycarpus dacrydioides* (kahikatea)
- *Hoheria angustifolia* (narrow-leaf lacebark)
- *Kunzea ericoides* (kānuka)
- *Leptospermum scoparium* (mānuka)
- *Olearia lineata* (small-leaved tree daisy)
- *Ozothamnus vauvilliersii* (mountain cottonwood)
- *Phormium cookianum* (wharariki/mountain flax)
- *Phormium tenax* (harakeke/flax)
- *Pittosporum tenuifolium* (kohuhu)
- *Plagianthus regius* (ribbonwood)
- *Podocarpus totara* (tōtara)
- *Sophora microphylla* (kōwhai)
- *Veronica salicifolia* (koromiko/hebe)

**Site preparation and planting:**

Plant guards and bamboo sticks are recommended, as is weed releasing at the time of planting for efficiency of maintenance.

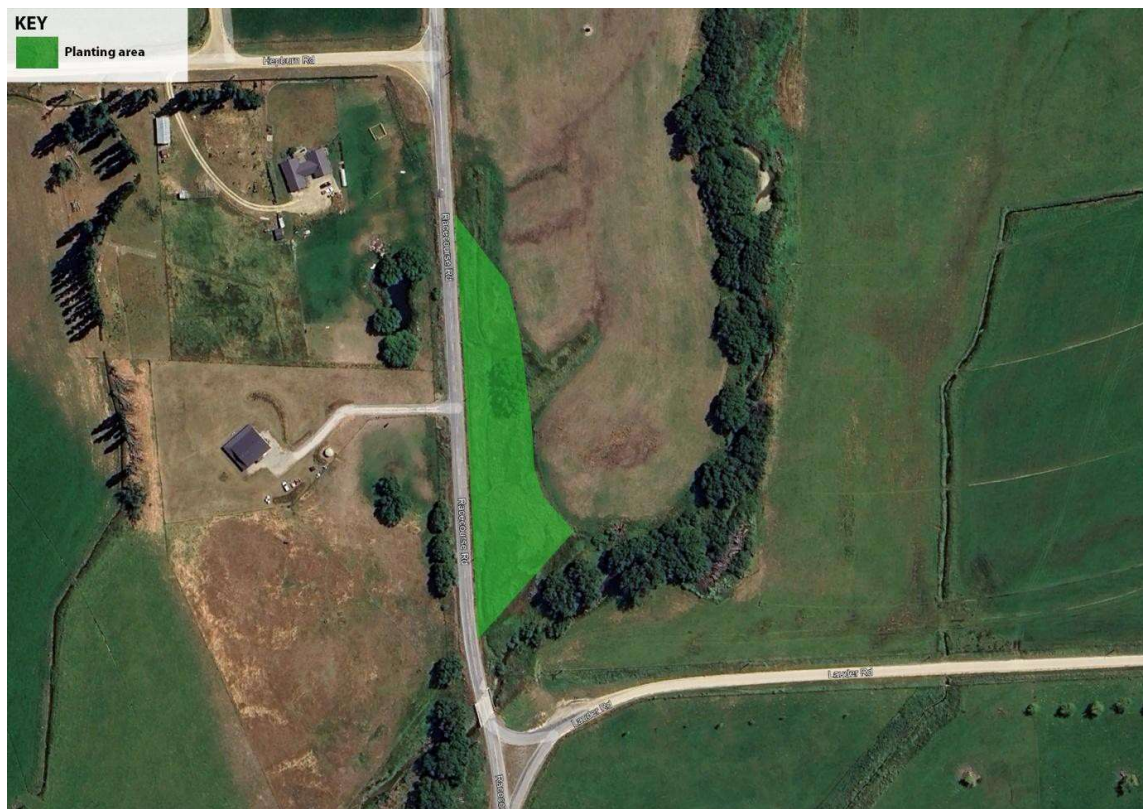


Figure 15 Plan view of planting area.



*Figure 16 Photograph looking north across the planting site.*